

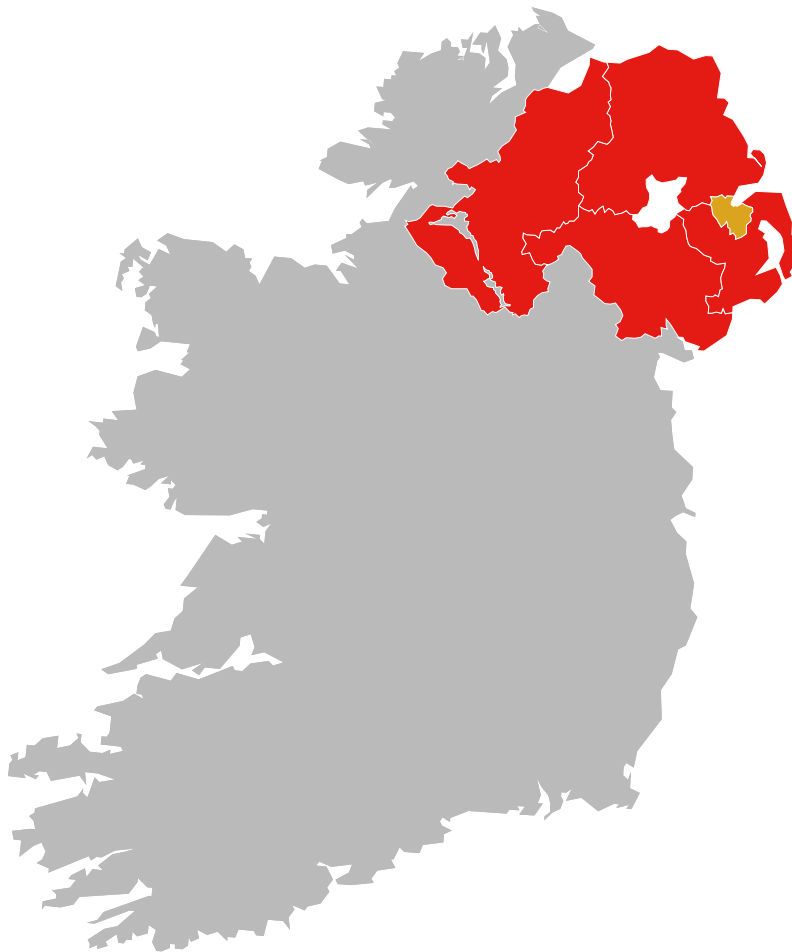
Maternal Mental Health Alliance

**Map of Specialist Community  
Perinatal Mental Health Teams  
(Northern Ireland)**

2020



# Specialist Community Perinatal Mental Health Services (Northern Ireland)



Level	Health and Social Care Trust Name
Yellow	Belfast
Red	Northern
Red	Southern
Red	Western
Red	South Western

LEVEL	COLOUR	CRITERIA
5	Green	Specialised perinatal community team that meets Perinatal Quality Network Standard Type 1 <a href="https://bit.ly/2ZRQLly">https://bit.ly/2ZRQLly</a>
4	Light Green	Specialised perinatal community team that meets Joint Commissioning Panel criteria <a href="http://bit.ly/2AhAVeX">http://bit.ly/2AhAVeX</a>
3	Yellow	Perinatal community service operating throughout working hours with at least a specialist perinatal psychiatrist with dedicated time AND specialist perinatal mental health nurse with dedicated time, with access to perinatal psychiatrist throughout working hours.
2	Light Yellow	Specialised perinatal psychiatrist AND specialist perinatal nurse with dedicated time
1	Pink	Specialised perinatal psychiatrist or specialist perinatal nurse with dedicated time only
0	Red	No provision
	Grey	Data not available

**Disclaimer** Details in this map have been compiled using the information available at the time of printing. Please contact [info@everyonesbusiness.org.uk](mailto:info@everyonesbusiness.org.uk) if you suspect any inaccuracy.

More than 1 in 10 women develop a mental illness during pregnancy or within the first year after having a baby.

[maternalmentalhealthalliance.org/campaign](http://maternalmentalhealthalliance.org/campaign)



MATERNAL MENTAL  
HEALTH ALLIANCE  
*everyone's business*

# Specialist Community Perinatal Mental Health Services Northern Ireland

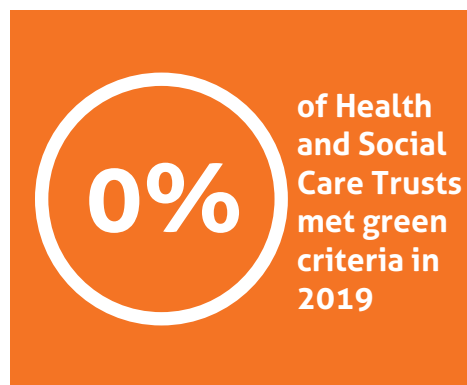
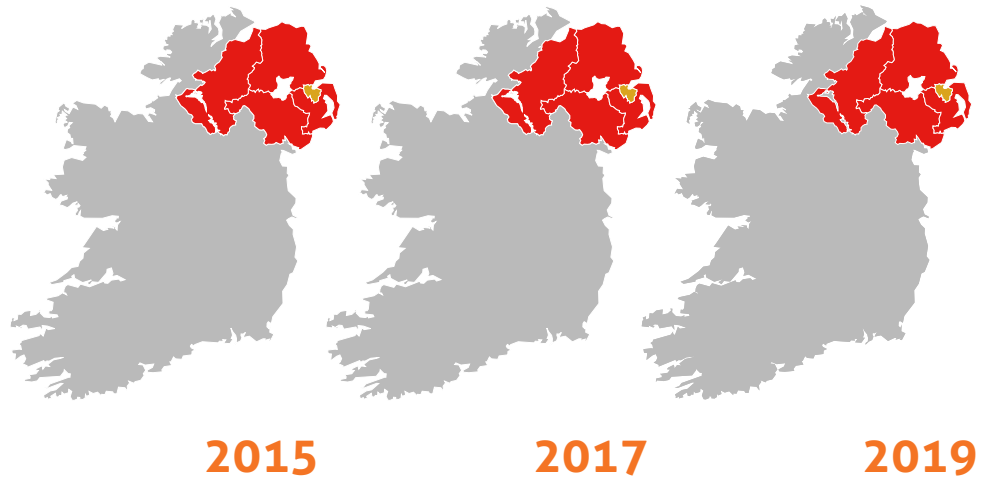
The MMHA calls for all women throughout the UK who experience a perinatal mental illness to receive the care they and their families need, wherever and whenever they need it. Whilst we celebrate progress in specialist perinatal mental health (PMH) services in some parts of the UK, it is vital we keep pushing to **Turn – and Keep – the Map Green.**

## Funding, plans and commitments



- 2018:**
  - Funding for staff training in PMH
- 2019:**
  - All political parties co-sign Consensus Statement
- 2020:**
  - The Mental Health Action Plan includes objective to agree and fund a new service model for specialist community PMH services by Sept 2020

## The story so far

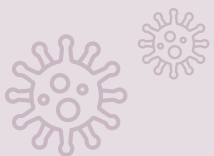


## Risks and concerns



It is fantastic to finally have a commitment to specialist PMH community services, but there is still a journey ahead:

- 1 80% of the country cannot access specialist community services
- 2 Will there be enough staff for the planned specialist community services?
- 3 No plans officially announced for a Mother and Baby Unit in Northern Ireland
- 4 How to ensure plans are concrete and funding is sufficient and sustainable?



## What will be the impact of COVID-19?

The COVID-19 pandemic will impact on the already high rates of PMH need, with potential long-term consequences. PMH experts fear an increase of referrals on the horizon, meaning national and local decision-makers must proactively PLAN with the *mental* as well as physical health needs of women and families in mind during and beyond COVID-19.

The Maternal Mental Health Alliance's Everyone's Business campaign calls for all women throughout the UK with PMH conditions to receive the treatment they need, where and when they need it.

**Help Turn – and Keep – the Map Green.**

## Map of Specialist Community Perinatal Mental Health Teams (Northern Ireland)

**Published August 2020**

©Maternal Mental Health Alliance, 2020

Published by:  
Maternal Mental Health Alliance

**[www.maternalmentalhealthalliance.org](http://www.maternalmentalhealthalliance.org)**

The Maternal Mental Health Alliance is a Charitable Incorporated Organisation (CIO) registered in England and Wales (no. 1178152).

Registered address: International House, 12 Constance Street, London E16 2DQ

