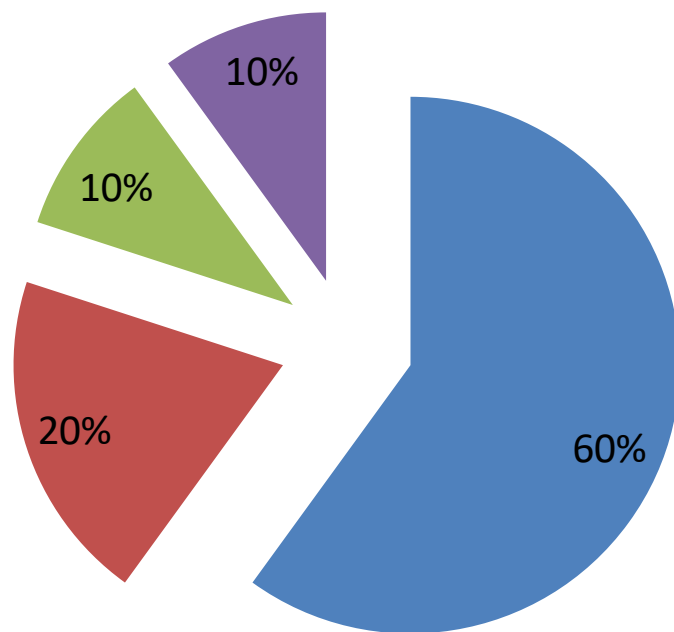


# Babies Can't Wait: developing an integrated perinatal and parent-infant mental health pathway using the THRIVE model

*Catherine Mee, Pathway Lead, Children's Universal Services,  
Tameside and Glossop Integrated Care NHS Foundation Trust*

*Katie Reid, Child Psychotherapist, Tameside and Glossop Early  
Attachment Service, Pennine Care NHS Foundation Trust*

**Attachment Relationships in Children  
aged 0-3 years  
Tameside and Glossop (ONS 2006)**

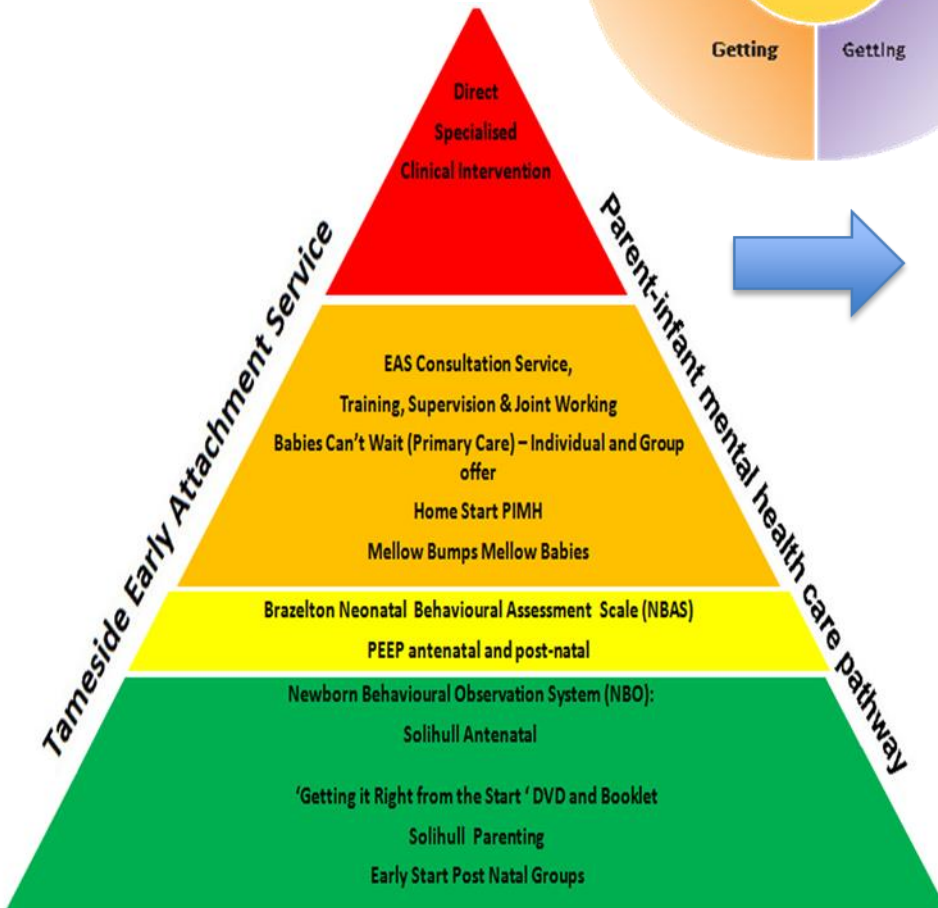


■ Securely attached: (n= 6,996)

■ Possibly struggling with attachment relationship: (n= 2332)

■ Struggling with attachment relationship: (n= 1166)

■ Concerning parent / infant relationship: (n= 1166)

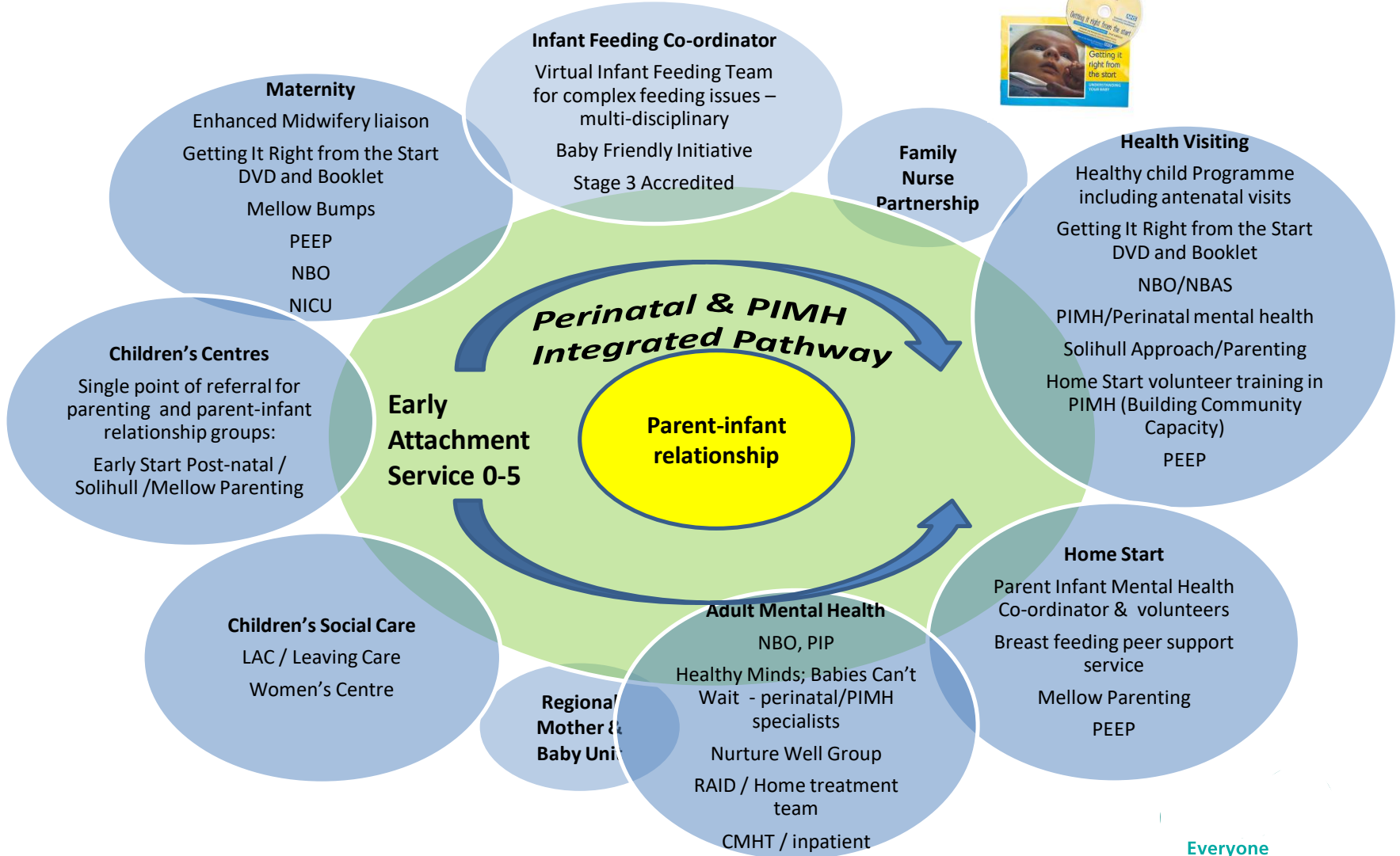


<http://www.annafreud.org/service-improvement/service-improvement-resources/thrive/>

## More about Thrive in Tameside and Glossop

- Parents and infants on the **Thriving Pathway** can expect to receive appropriate information on wellbeing and maintaining good mental health, and to access universal services.
- Parents and infants on the **Getting Advice and Getting Help Pathways** can expect GPs, a Lead Midwife (or Health Visitor if the Midwife has already discharged) to monitor mental health and liaise and plan care and access to targeted group support.
- Parents and infants on the **Getting More Help and Getting Risk Support Pathways** can expect a Lead Professional or Care Coordinator to monitor mental health. Multi-agency meetings should be convened and a clear plan of care developed for pregnancy and in the postnatal period. This will include social care if there are significant risks of harm to the baby.





- Simon & Anne's Story



# Contact details

Catherine Mee

[cmee@nhs.net](mailto:cmee@nhs.net)

Katie Reid

[kreid5@nhs.net](mailto:kreid5@nhs.net)